

**L-73/Taylor Creek
Levee Improvements**

Proposed Impacts						
Wetland Impact Areas	Community Type	Fill	Excavate / Conversion	Clear / Conversion	Temporary	Total
1	<i>herbaceous</i>			0.02		0.02
2	forested	3.21	0.33	1.25		4.79
	open water				0.99	0.99
3	forested	4.3		0.2		4.5
4	forested	0.03	0.04	0.23		0.3
5	shrub/herbaceous	0.01	0.24	0.15		0.4
6	shrub/herbaceous		0.07	0.04		0.11
7	shrub/herbaceous		0.02	0.01		0.03
8	<i>herbaceous</i>		0.03	0.01		0.04
9	<i>shrub</i>	0.19	0.02	0.12		0.33
10	<i>shrub</i>	0.06	0.03	0.05		0.14
11	<i>shrub</i>	0.05	0.05	0.02		0.12
12	forested	0.8	0.21	0.17		1.18
13	<i>shrub/herbaceous</i>	0.04	0.05	0.07		0.16
14	forested	0.82	0.09	0.44		1.35
15	forested	1.64		1.48		3.12
16	forested	3.1	1.08	1.37		5.55
17	<i>herbaceous</i>	0.03		0.05		0.08
18	<i>shrub</i>	0.02		0.11		0.13
19	<i>shrub</i>	0.13		0.3		0.43
20	herbaceous	0.02		0.2		0.22
	Total acres	14.45	2.26	6.29	0.99	23.99
	Acres mitigated	13.91	2.08	5.34	0	21.33

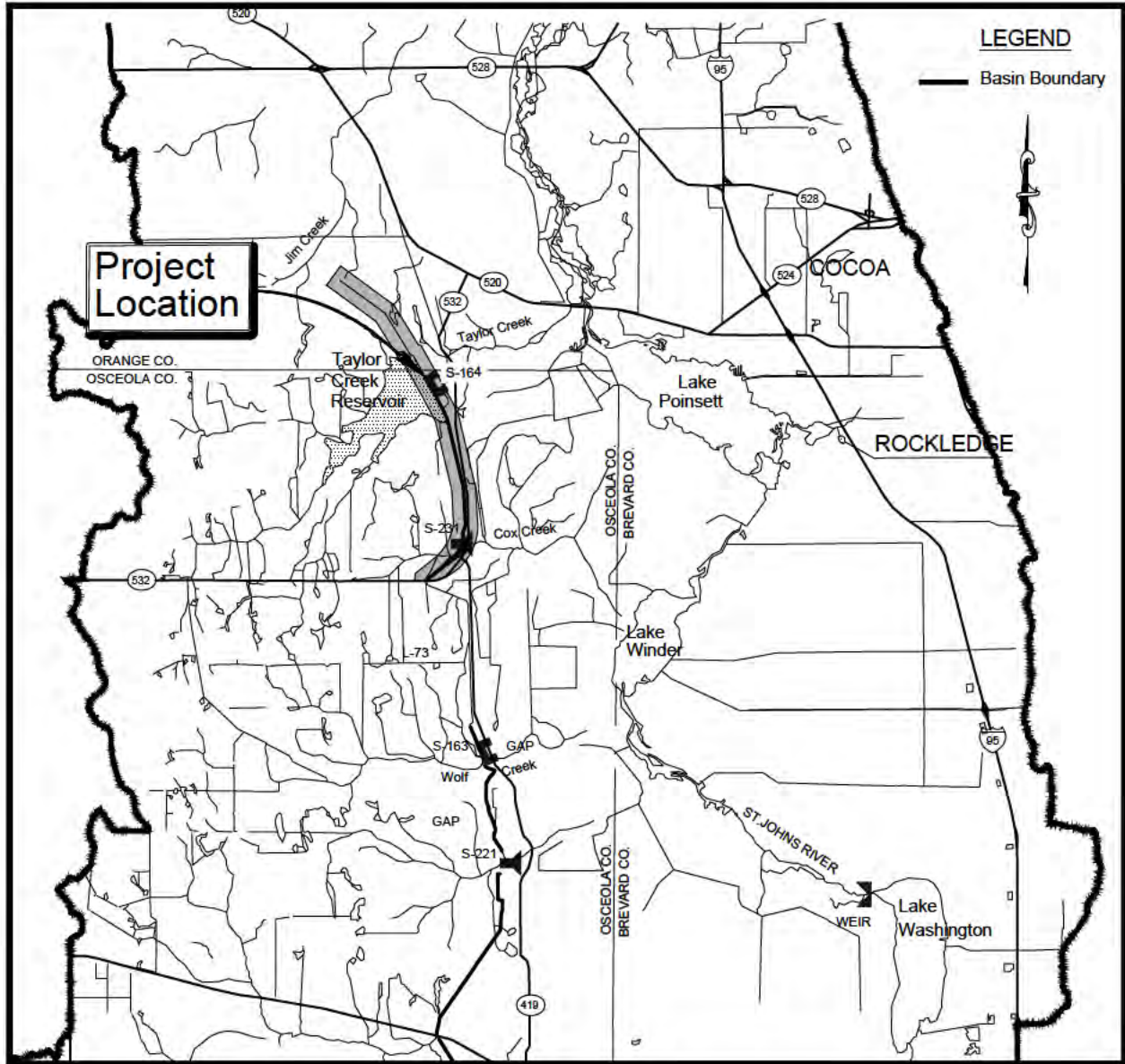
Italics denote isolated wetlands that are not jurisdictional under federal rules
 Figures in red denote impacts that will be mitigated

ST. JOHNS RIVER WATER MANAGEMENT DISTRICT

UPPER ST. JOHNS RIVER BASIN

TAYLOR CREEK L-73 LEVEE IMPROVEMENTS

INDIAN RIVER COUNTY, FLORIDA



VICINITY MAP
 NOT TO SCALE

UPPER ST. JOHNS RIVER BASIN
 TAYLOR CREEK L-73 LEVEE IMPROVEMENTS
 INDIAN RIVER COUNTY, FLORIDA



ST. JOHNS RIVER
WATER MANAGEMENT DISTRICT
 P.O. BOX 1429 PALATKA, FLORIDA



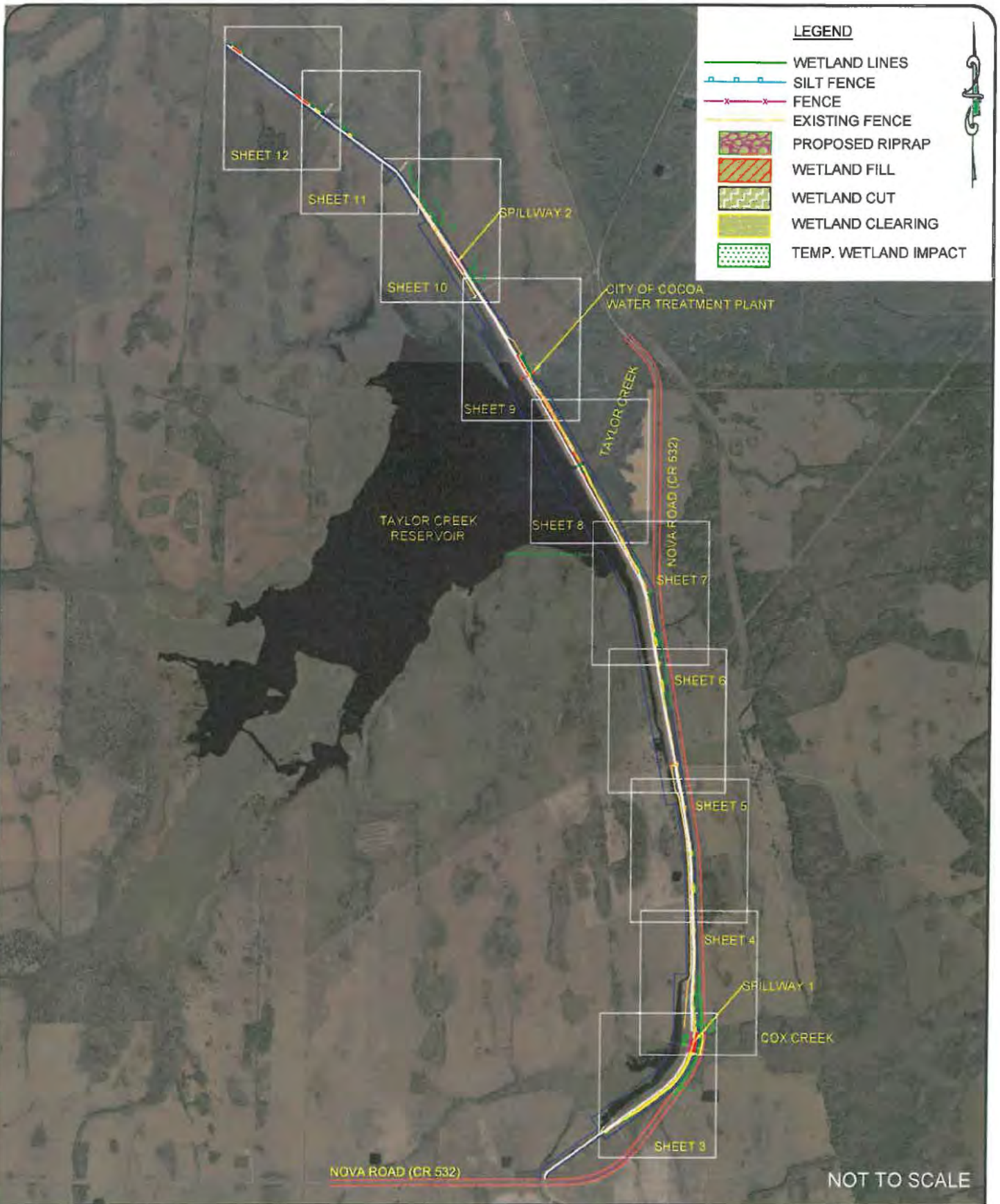
COVER & VICINITY MAP

AMY POGUE WRIGHT P.E. # 54851 DATE: 06/02/2017

SHEET NUMBER:

C1

I:\ENGDATA\DESIGN\US\IRBT\Taylor_Creek_Reservoir\LEVEE IMPROVEMENTS PROJECT\DRAWINGS\PERMIT DRAWINGS\SITE PLAN.dwg



UPPER ST. JOHNS RIVER BASIN
 TAYLOR CREEK L-73 LEVEE IMPROVEMENTS
 INDIAN RIVER COUNTY, FLORIDA



ST. JOHNS RIVER
WATER MANAGEMENT DISTRICT
 P.O. BOX 1429 PALATKA, FLORIDA








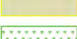



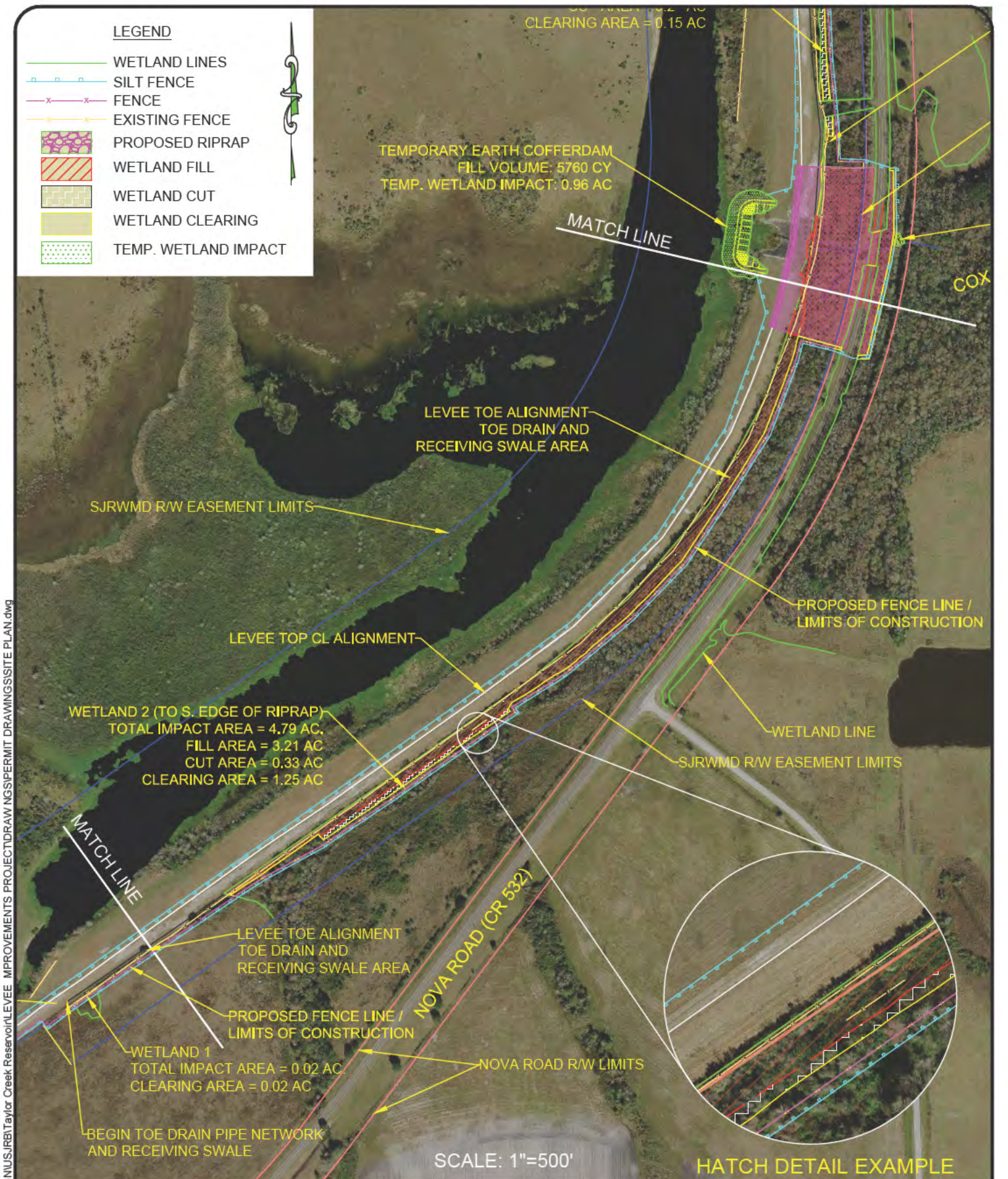
OVERALL SITE PLAN

AMY POGUE WRIGHT P.E. # 54851 DATE: 06/02/2017

SHEET NUMBER:
 C2

LEGEND

-  WETLAND LINES
-  SILT FENCE
-  FENCE
-  EXISTING FENCE
-  PROPOSED RIPRAP
-  WETLAND FILL
-  WETLAND CUT
-  WETLAND CLEARING
-  TEMP. WETLAND IMPACT



I:\ENGDATA\DESIGN\US\IRB\Taylor_Creek_Reservoir\LEVEE IMPROVEMENTS PROJECT\DRAWINGS\PERMIT DRAWINGS\SITE PLAN.dwg

UPPER ST. JOHNS RIVER BASIN
TAYLOR CREEK L-73 LEVEE IMPROVEMENTS
INDIAN RIVER COUNTY, FLORIDA



ST. JOHNS RIVER
WATER MANAGEMENT DISTRICT
P.O. BOX 1429 PALATKA, FLOR DA



PARTIAL SITE PLAN

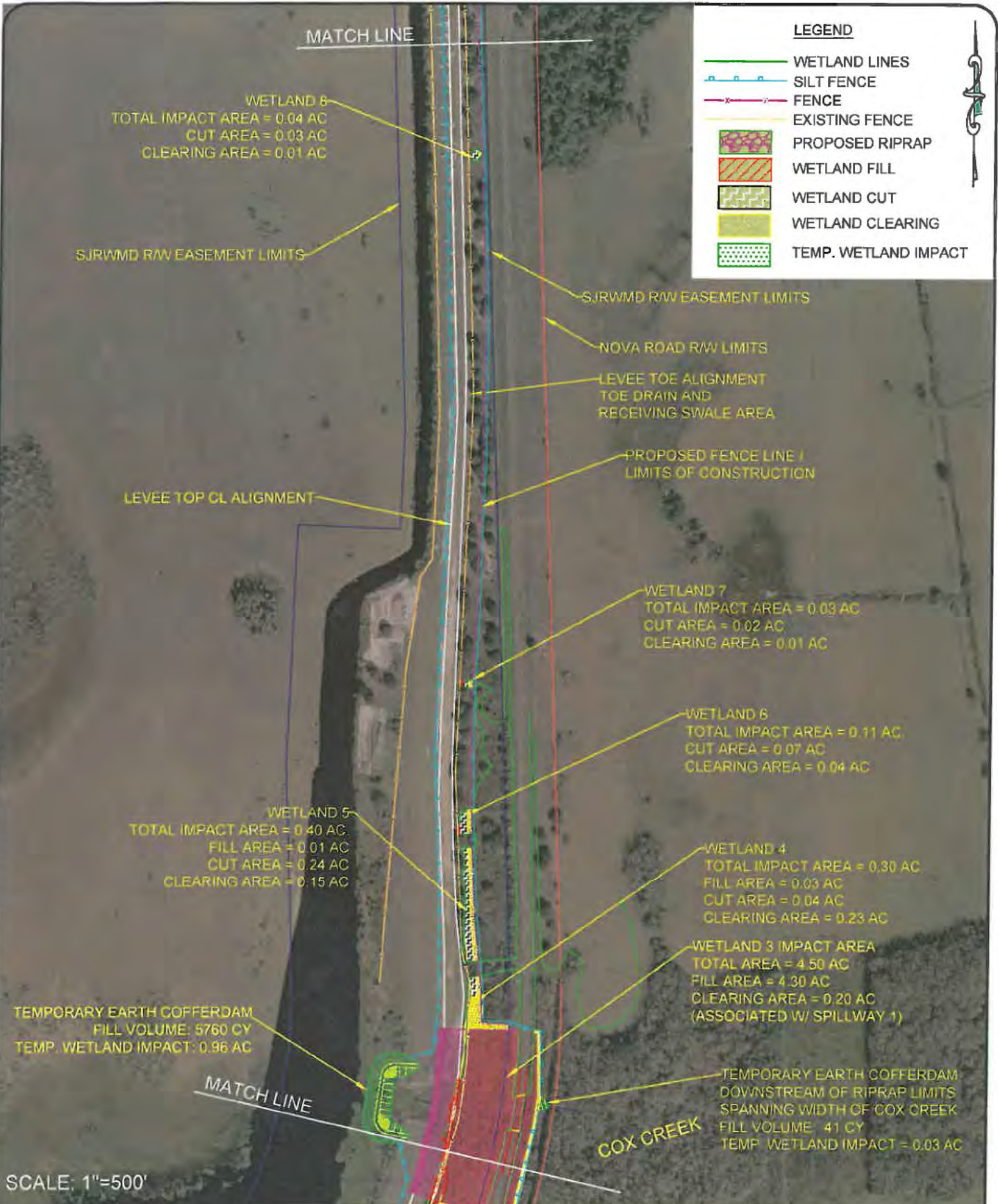
AMY POGUE WRIGHT P.E. # 54851

DATE: 06/02/2017

SHEET NUMBER:

C3

I:\ENGDATA\DESIGN\JRB\Taylor Creek Reservoir\LEVEE IMPROVEMENTS PROJECT\DRAWINGS\PERMIT DRAWINGS\SITE PLAN.dwg



UPPER ST. JOHNS RIVER BASIN
TAYLOR CREEK L-73 LEVEE IMPROVEMENTS
INDIAN RIVER COUNTY, FLORIDA



ST. JOHNS RIVER
WATER MANAGEMENT DISTRICT
P.O. BOX 1429 PALATKA, FLORIDA

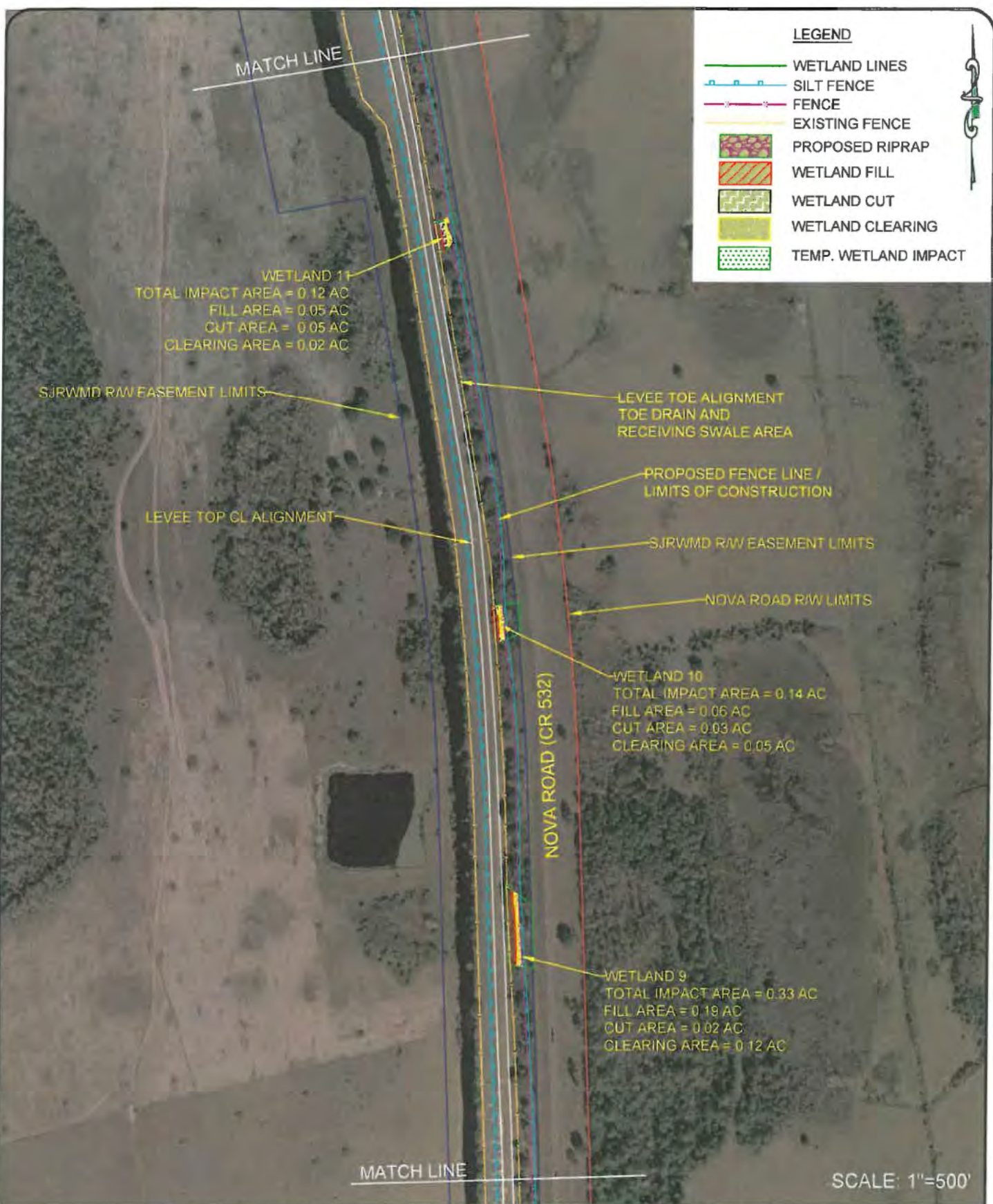


PARTIAL SITE PLAN

AMY POGUE WRIGHT P.E. # 54851 DATE: 06/02/2017

SHEET NUMBER:
C4

I:\ENG\DATA\DESIGN\JUS\JRB\Taylor Creek Reservoir\LEVEE IMPROVEMENTS PROJECT\DRAWINGS\PERMIT DRAWINGS\SITE PLAN.dwg



UPPER ST. JOHNS RIVER BASIN
TAYLOR CREEK L-73 LEVEE IMPROVEMENTS
INDIAN RIVER COUNTY, FLORIDA

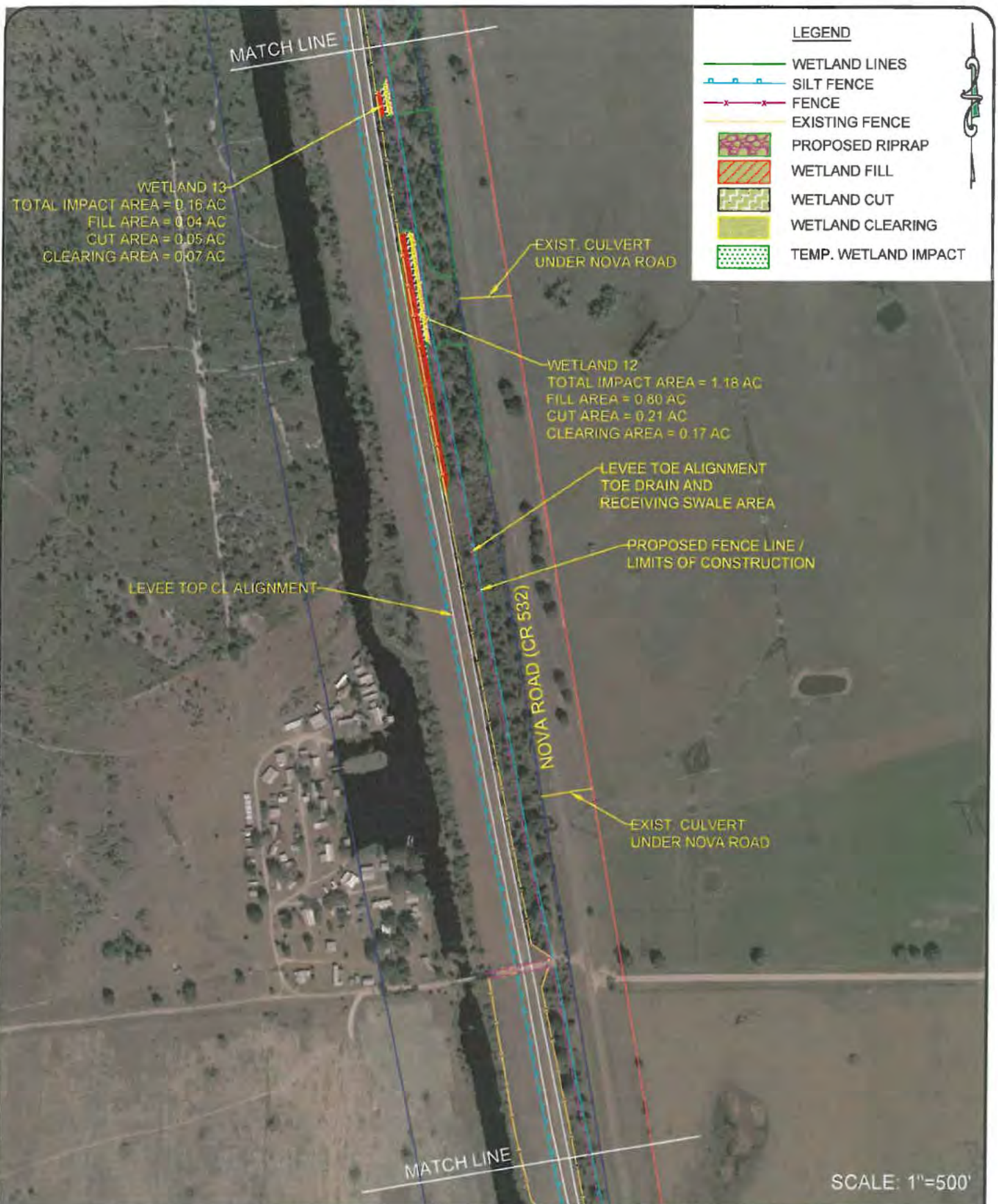
ST. JOHNS RIVER
WATER MANAGEMENT DISTRICT
P.O. BOX 1429 PALATKA, FLORIDA

PARTIAL SITE PLAN

AMY POGUE WRIGHT P.E. # 54851 DATE: 06/02/2017

SHEET NUMBER:
C5

I:\ENGDAT\DESIGN\US\JRB\Taylor Creek Reservoir\LEVEE IMPROVEMENTS PROJECT\DRAWINGS\PERMIT DRAWINGS\SITE PLAN.dwg



UPPER ST. JOHNS RIVER BASIN
TAYLOR CREEK L-73 LEVEE IMPROVEMENTS
INDIAN RIVER COUNTY, FLORIDA



ST. JOHNS RIVER
WATER MANAGEMENT DISTRICT
P.O. BOX 1429 PALATKA, FLORIDA

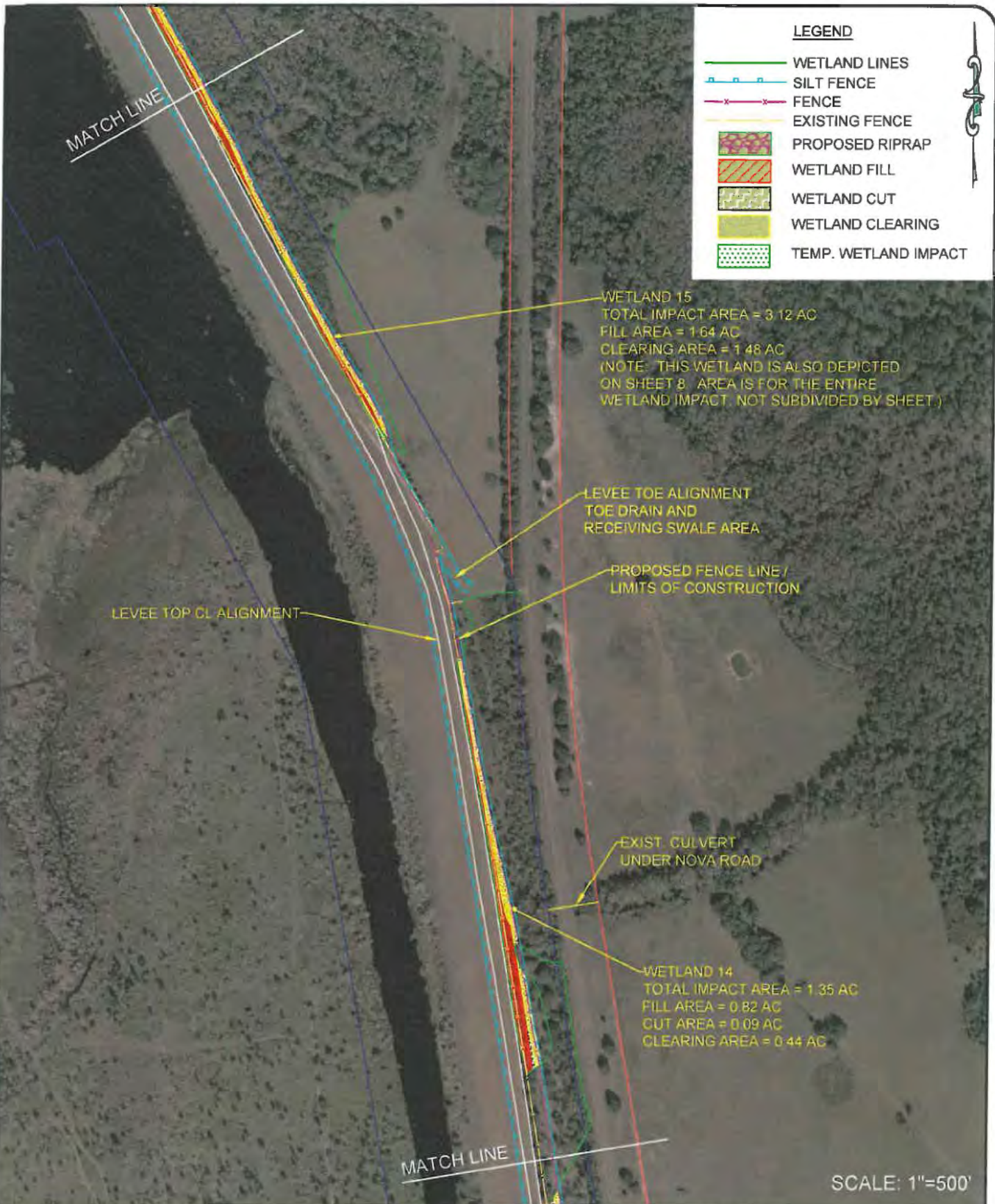


PARTIAL SITE PLAN

AMY POGUE WRIGHT P.E. # 54851 DATE: 06/02/2017

SHEET NUMBER:
C6

I:\ENGDAT\DESIGN\US\JRB\Taylor Creek Reservoir\LEVEE IMPROVEMENTS PROJECT\DRAWINGS\PERMIT DRAWINGS\SITE PLAN.dwg



WETLAND 15
 TOTAL IMPACT AREA = 3.12 AC
 FILL AREA = 1.64 AC
 CLEARING AREA = 1.48 AC
 (NOTE: THIS WETLAND IS ALSO DEPICTED ON SHEET 8. AREA IS FOR THE ENTIRE WETLAND IMPACT, NOT SUBDIVIDED BY SHEET.)

LEVEE TOE ALIGNMENT
 TOE DRAIN AND
 RECEIVING SWALE AREA

PROPOSED FENCE LINE /
 LIMITS OF CONSTRUCTION

LEVEE TOP CL ALIGNMENT

EXIST. CULVERT
 UNDER NOVA ROAD

WETLAND 14
 TOTAL IMPACT AREA = 1.35 AC
 FILL AREA = 0.82 AC
 CUT AREA = 0.09 AC
 CLEARING AREA = 0.44 AC

SCALE: 1"=500'

UPPER ST. JOHNS RIVER BASIN
 TAYLOR CREEK L-73 LEVEE IMPROVEMENTS
 INDIAN RIVER COUNTY, FLORIDA



ST. JOHNS RIVER
WATER MANAGEMENT DISTRICT
 P.O. BOX 1429 PALATKA, FLORIDA



PARTIAL SITE PLAN

AMY POGUE WRIGHT P.E. # 54851 DATE: 06/02/2017

SHEET NUMBER:
C7

I:\ENGDATA\DESIGN\US\IRBT\Taylor Creek Reservoir\LEVEE IMPROVEMENTS PROJECT\DRAWINGS\PERMIT DRAWINGS\SITE PLAN.dwg



UPPER ST. JOHNS RIVER BASIN
 TAYLOR CREEK L-73 LEVEE IMPROVEMENTS
 INDIAN RIVER COUNTY, FLORIDA



**ST. JOHNS RIVER
 WATER MANAGEMENT DISTRICT**
 P.O. BOX 1429 PALATKA, FLORIDA

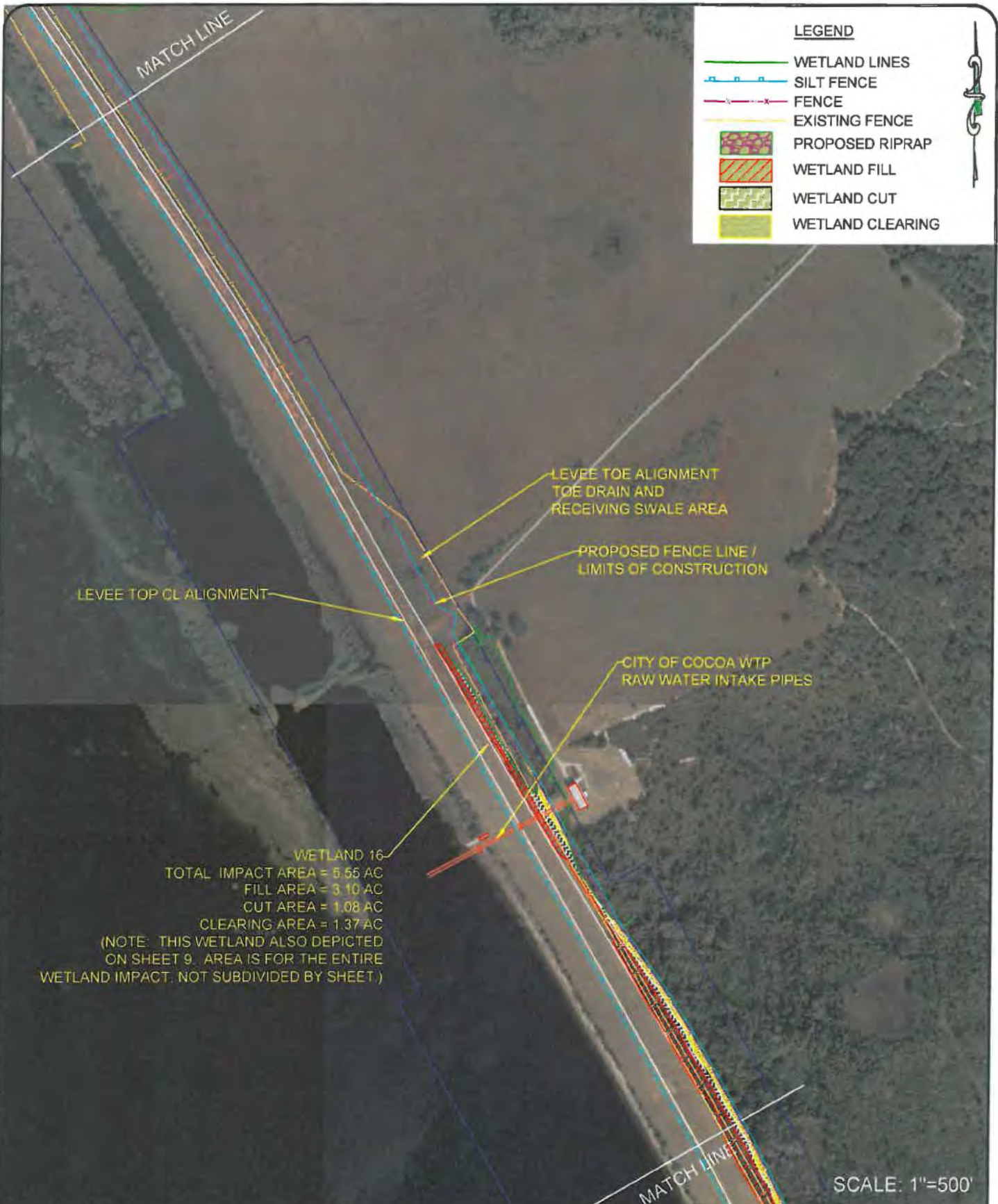


PARTIAL SITE PLAN

AMY POGUE WRIGHT P.E. # 54851 DATE: 06/02/2017

SHEET NUMBER:
C8

I:\ENGD\TA\DESIGN\US\IRBT\Taylor Creek Reservoir\LEVEE IMPROVEMENTS\PROJECT\DRAWINGS\PERMIT DRAWINGS\SITE PLAN.dwg



LEVEE TOP CL ALIGNMENT

LEVEE TOE ALIGNMENT
TOE DRAIN AND
RECEIVING SWALE AREA

PROPOSED FENCE LINE /
LIMITS OF CONSTRUCTION

CITY OF COCOA WTP
RAW WATER INTAKE PIPES

WETLAND 16
 TOTAL IMPACT AREA = 5.55 AC
 FILL AREA = 3.10 AC
 CUT AREA = 1.08 AC
 CLEARING AREA = 1.37 AC
 (NOTE: THIS WETLAND ALSO DEPICTED
 ON SHEET 9. AREA IS FOR THE ENTIRE
 WETLAND IMPACT. NOT SUBDIVIDED BY SHEET.)

SCALE: 1"=500'

UPPER ST. JOHNS RIVER BASIN
 TAYLOR CREEK L-73 LEVEE IMPROVEMENTS
 INDIAN RIVER COUNTY, FLORIDA



ST. JOHNS RIVER
WATER MANAGEMENT DISTRICT
 P.O. BOX 1429 PALATKA, FLORIDA

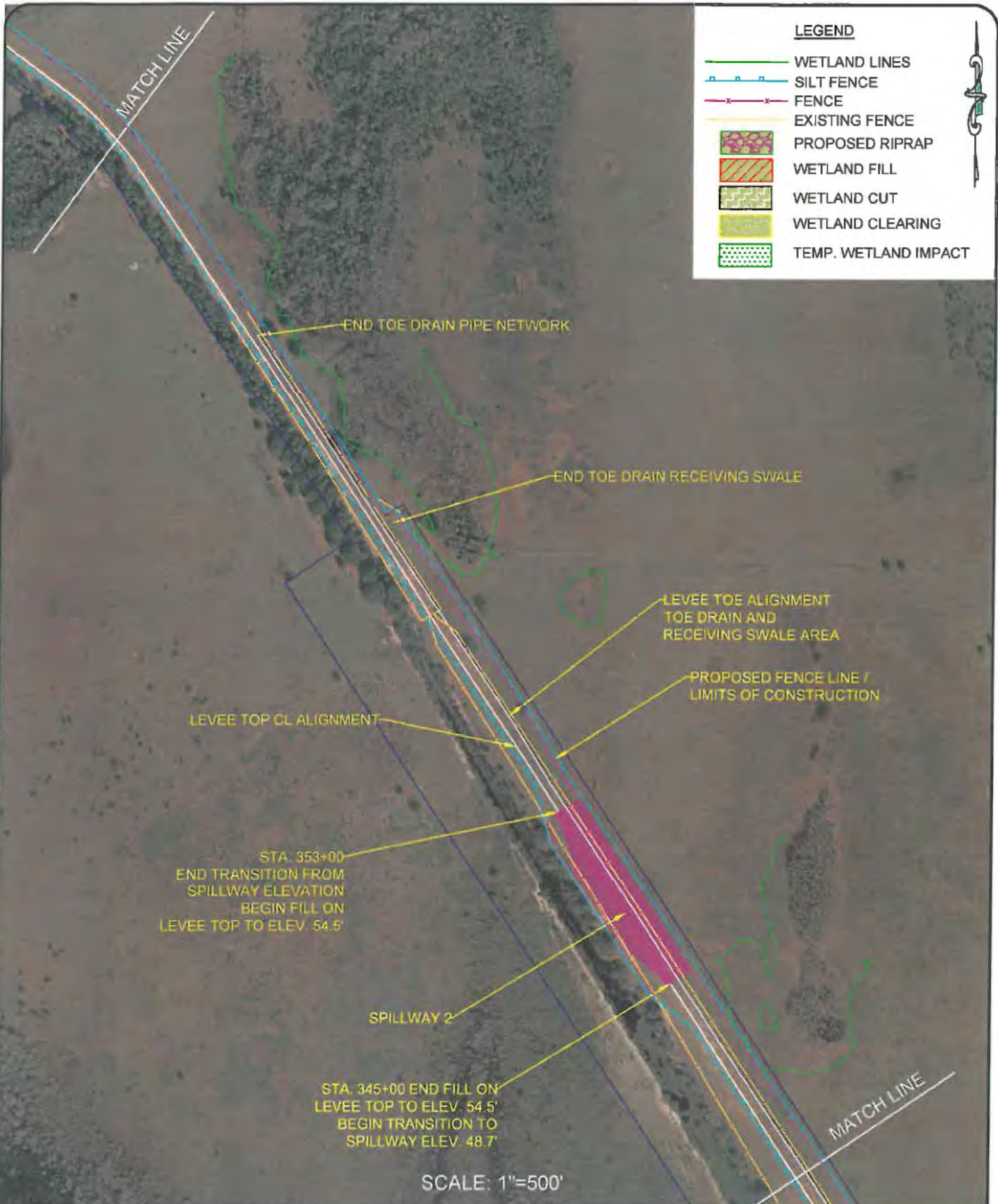


PARTIAL SITE PLAN

AMY POGUE WRIGHT P.E. # 54851 DATE: 06/02/2017

SHEET NUMBER:
C9

I:\ENGDATA\DESIGN\JRB\Taylor Creek Reservoir\LEVEE IMPROVEMENTS PROJECT\DRAWINGS\PERMIT DRAWINGS\SITE PLAN.dwg



LEGEND

- WETLAND LINES
- SILT FENCE
- FENCE
- EXISTING FENCE
- PROPOSED RIPRAP
- WETLAND FILL
- WETLAND CUT
- WETLAND CLEARING
- TEMP. WETLAND IMPACT

MATCH LINE

END TOE DRAIN PIPE NETWORK

END TOE DRAIN RECEIVING SWALE

LEVEE TOE ALIGNMENT TOE DRAIN AND RECEIVING SWALE AREA

PROPOSED FENCE LINE / LIMITS OF CONSTRUCTION

LEVEE TOP CL ALIGNMENT

STA. 353+00
END TRANSITION FROM SPILLWAY ELEVATION
BEGIN FILL ON LEVEE TOP TO ELEV. 54.5'

SPILLWAY 2

STA. 345+00 END FILL ON LEVEE TOP TO ELEV. 54.5'
BEGIN TRANSITION TO SPILLWAY ELEV. 48.7'

MATCH LINE

SCALE: 1"=500'

UPPER ST. JOHNS RIVER BASIN
TAYLOR CREEK L-73 LEVEE IMPROVEMENTS
INDIAN RIVER COUNTY, FLORIDA



**ST. JOHNS RIVER
WATER MANAGEMENT DISTRICT**
P.O. BOX 1429 PALATKA, FLORIDA

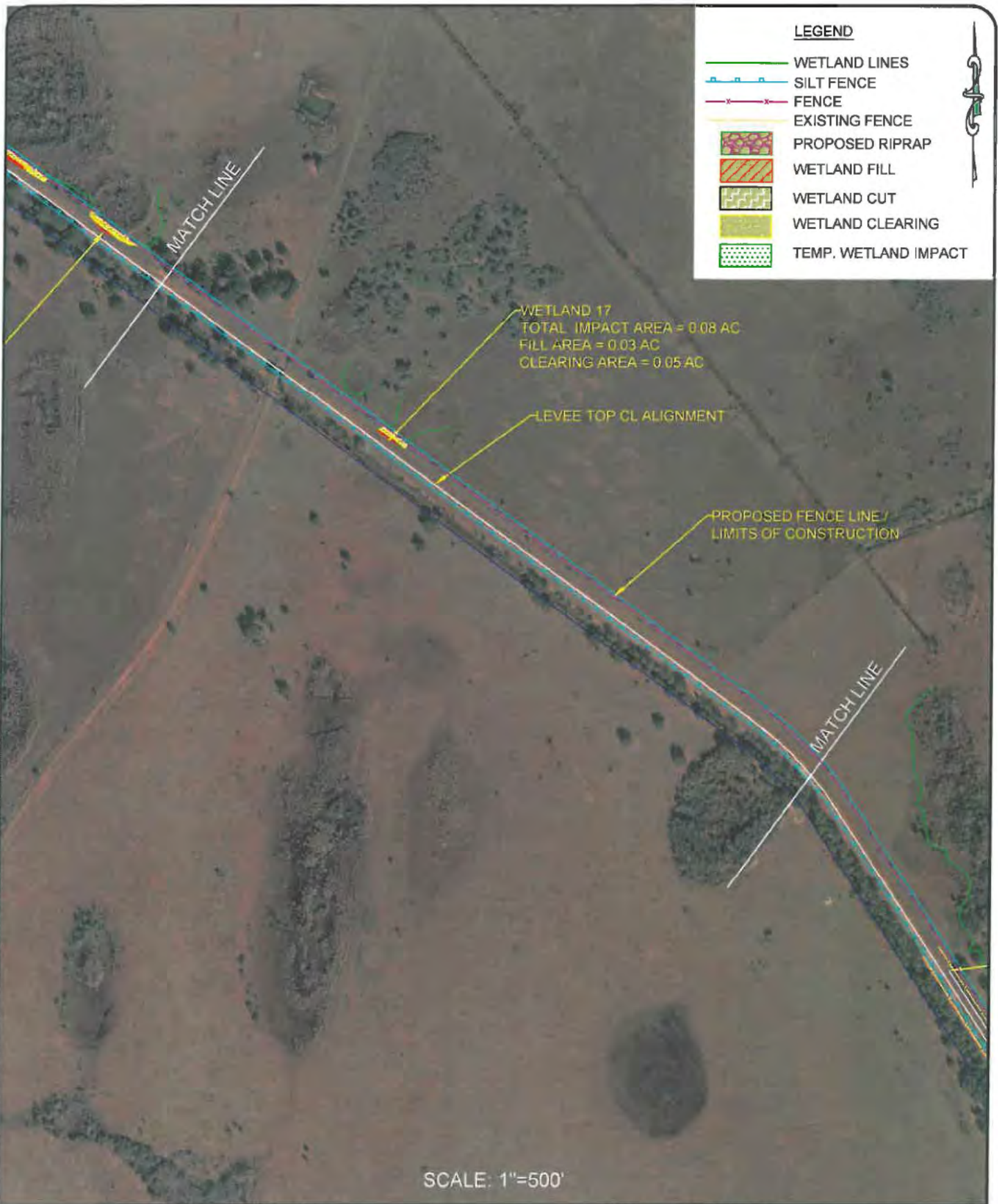


PARTIAL SITE PLAN

AMY POGUE WRIGHT P.E. # 54851 DATE: 06/02/2017

SHEET NUMBER:
C10

I:\ENGDATA\DESIGN\US\JRB\Taylor Creek Reservoir\LEVEE IMPROVEMENTS PROJECT\DRAWINGS\PERMIT DRAWINGS\SITE PLAN.dwg



UPPER ST. JOHNS RIVER BASIN
 TAYLOR CREEK L-73 LEVEE IMPROVEMENTS
 INDIAN RIVER COUNTY, FLORIDA



ST. JOHNS RIVER
WATER MANAGEMENT DISTRICT
 P.O. BOX 1429 PALATKA, FLORIDA

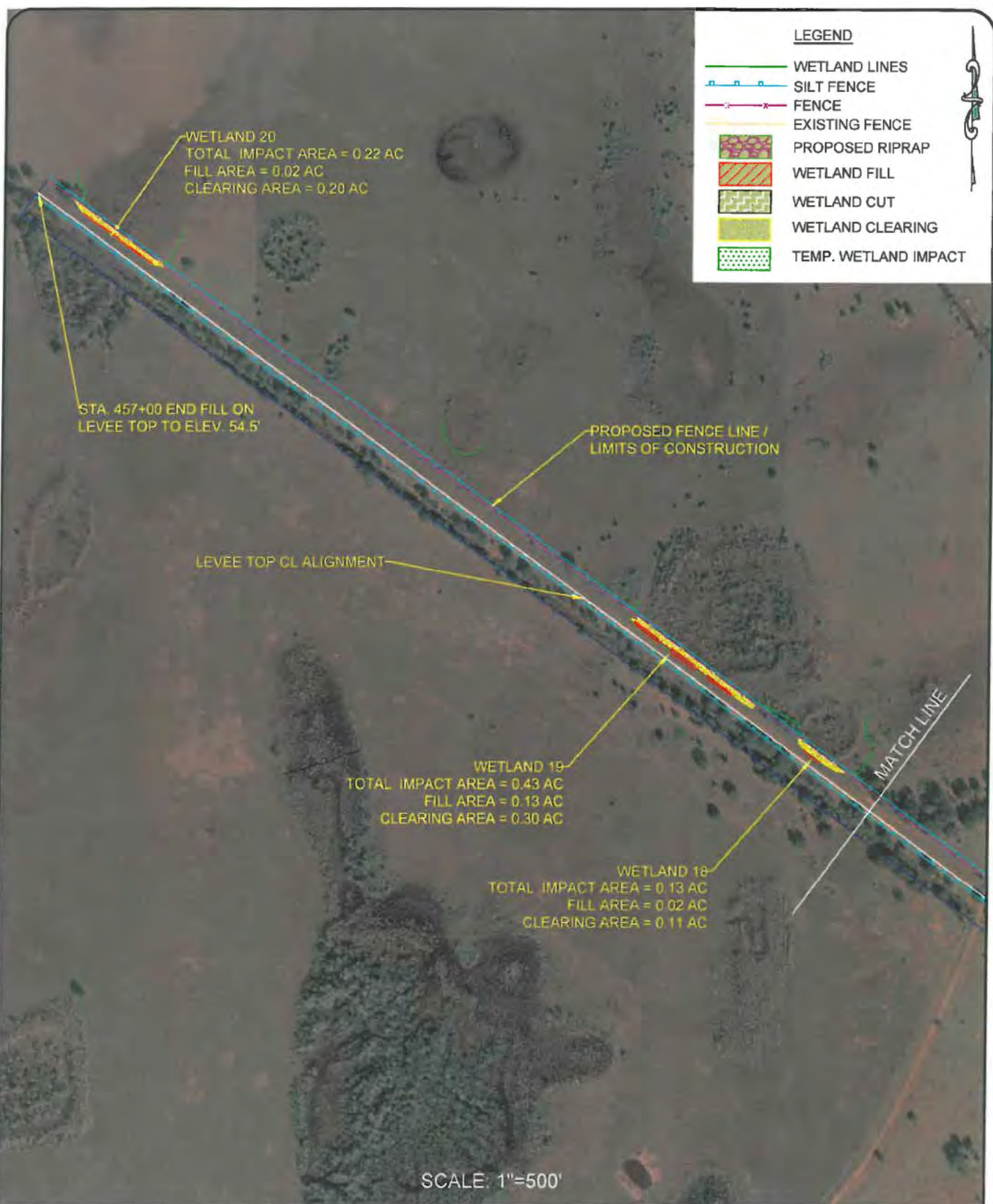


PARTIAL SITE PLAN

AMY POGUE WRIGHT P.E. # 54851 DATE: 06/02/2017

SHEET NUMBER:
C11

K:\ENG\DATA\DESIGN\US\IRBNTaylorCreekReservoir\LEVIEE IMPROVEMENTS PROJECT\DRAWINGS\PERMIT DRAWINGS\SITE PLAN.dwg



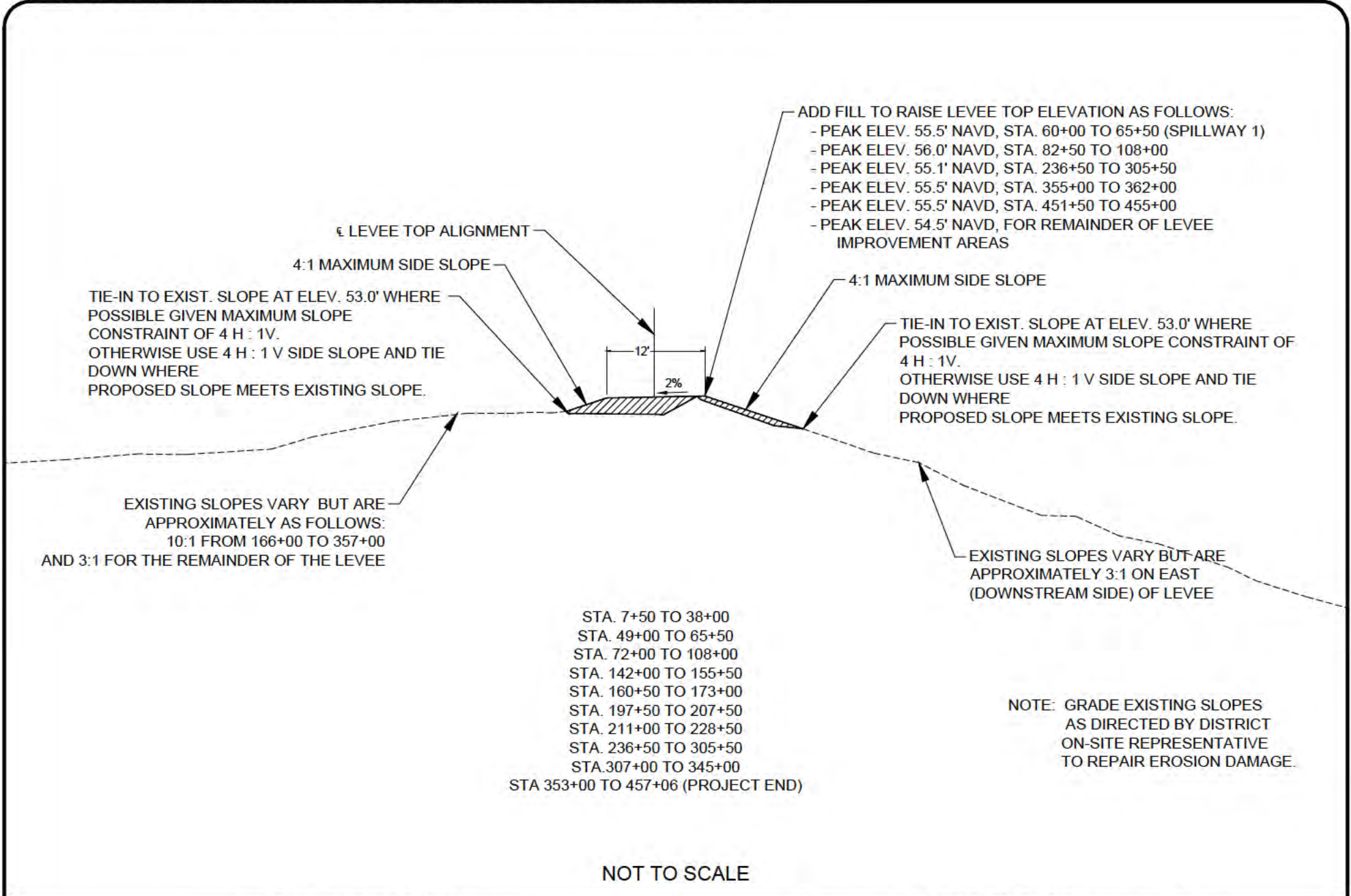
UPPER ST. JOHNS RIVER BASIN
TAYLOR CREEK L-73 LEVEE IMPROVEMENTS
INDIAN RIVER COUNTY, FLORIDA

ST. JOHNS RIVER
WATER MANAGEMENT DISTRICT
P.O. BOX 1429 PALATKA, FLORIDA

PARTIAL SITE PLAN

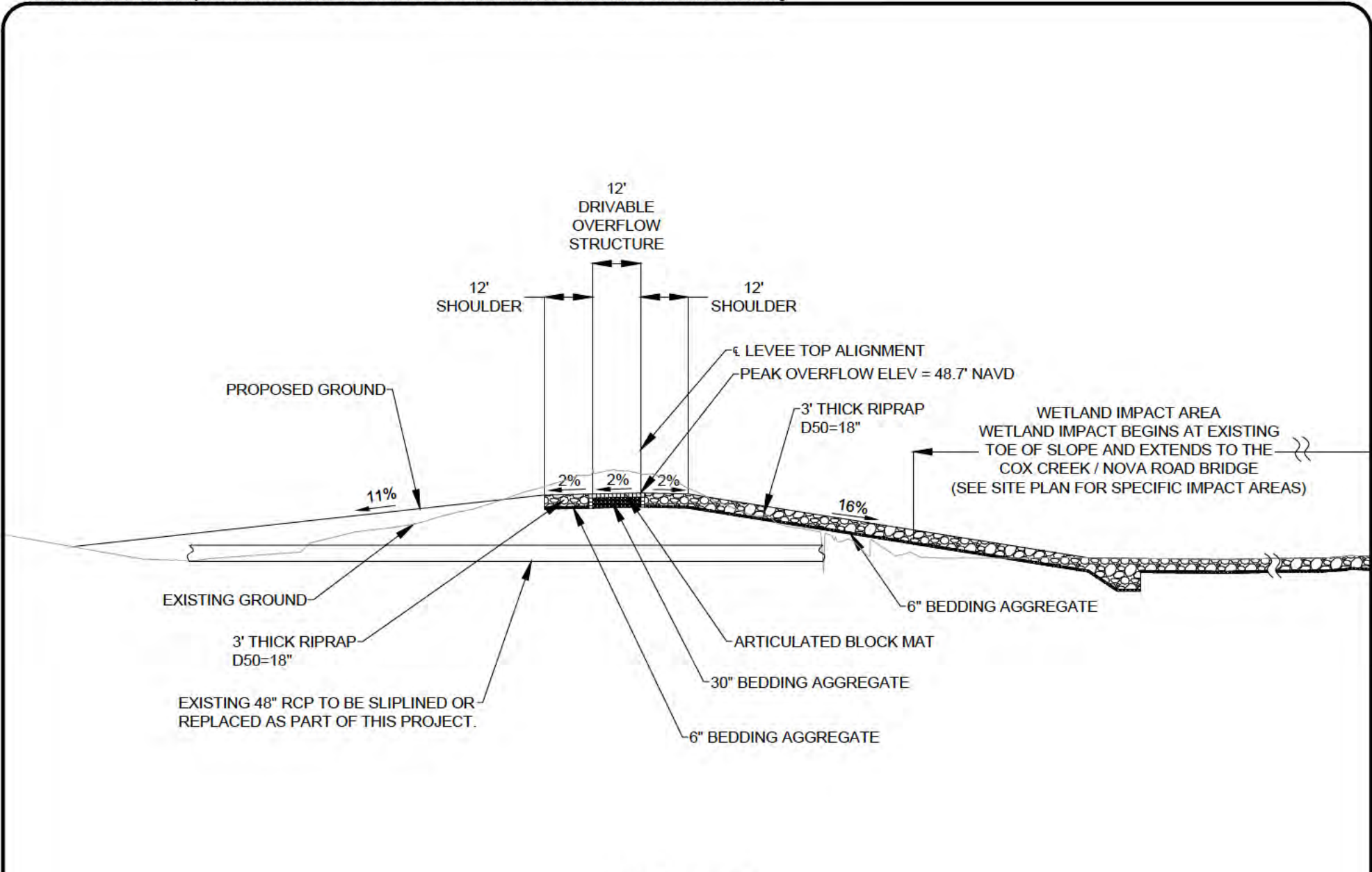
AMY POGUE WRIGHT P.E. # 54851 DATE: 06/02/2017

SHEET NUMBER:
C12



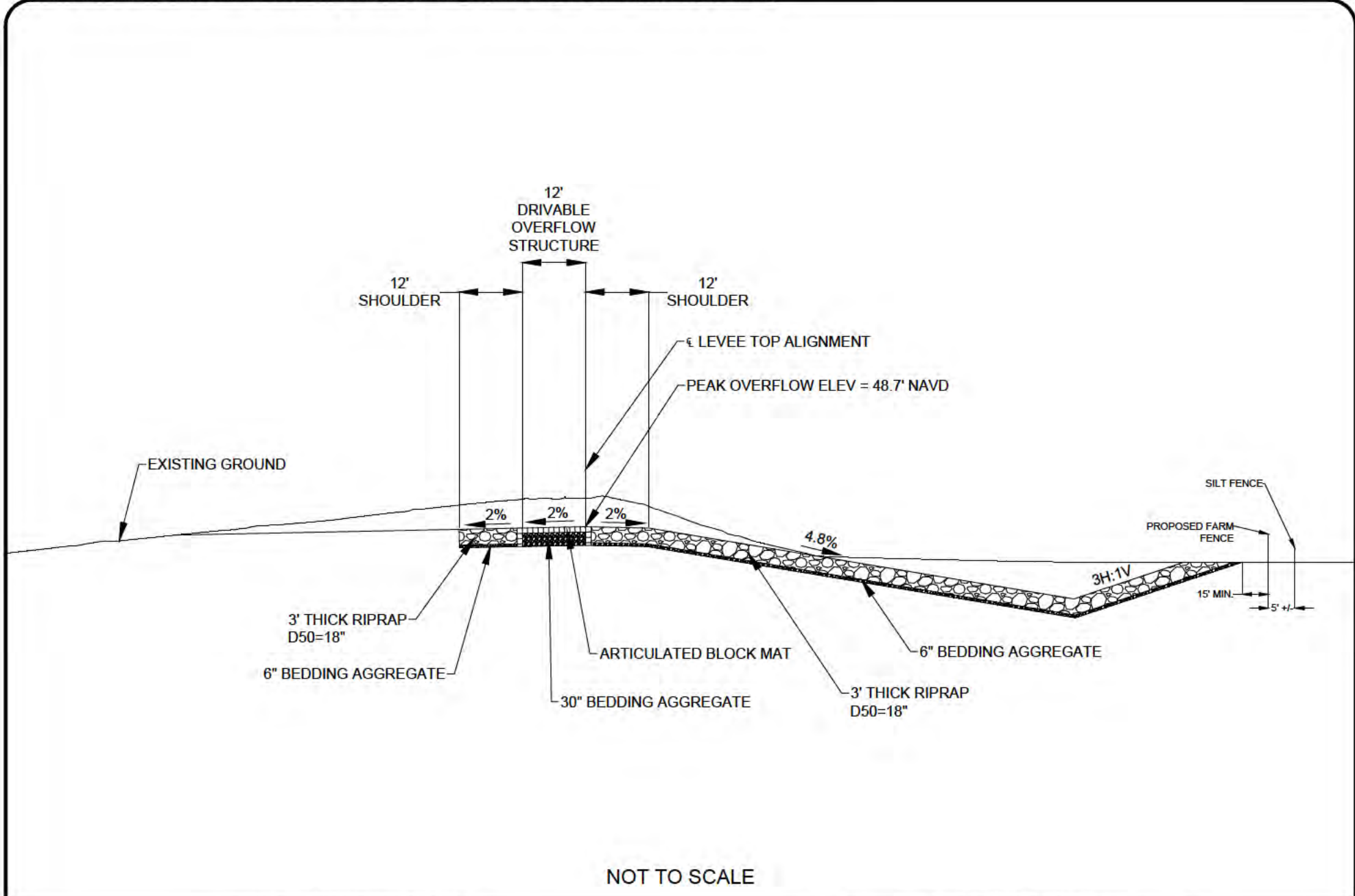
NOT TO SCALE

<p>UPPER ST. JOHNS RIVER BASIN TAYLOR CREEK L-73 LEVEE IMPROVEMENTS INDIAN RIVER COUNTY, FLORIDA</p>	<p>ST. JOHNS RIVER WATER MANAGEMENT DISTRICT P.O. BOX 1429 PALATKA, FLOR DA</p>	<p>SHEET NUMBER: C13</p>
<p>TYPICAL SECTION LEVEE TOP W/ NO TOE DRAIN OR SWALE NO WETLAND IMPACTS</p>	<p>AMY POGUE WRIGHT P.E. # 54851 DATE: 06/02/2017</p>	



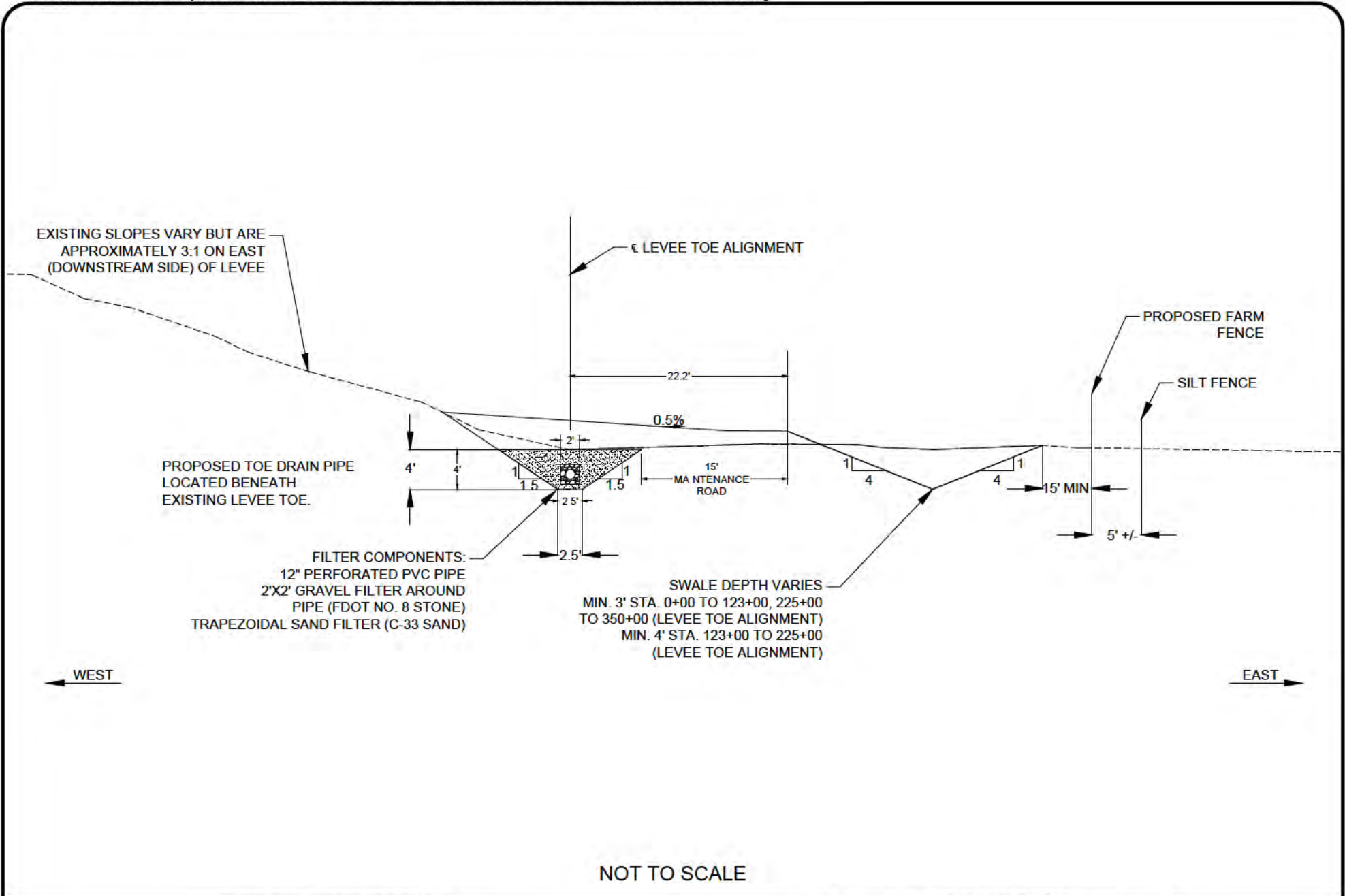
NOT TO SCALE

<p>UPPER ST. JOHNS RIVER BASIN TAYLOR CREEK L-73 LEVEE IMPROVEMENTS INDIAN RIVER COUNTY, FLORIDA</p>	<p>ST. JOHNS RIVER WATER MANAGEMENT DISTRICT P.O. BOX 1429 PALATKA, FLOR DA</p>	<p>SHEET NUMBER: C14</p>
<p>TYPICAL SECTION SPILLWAY 1 (SOUTH SPILLWAY AT COX CREEK) WETLAND 3</p>	<p>AMY POGUE WRIGHT P.E. # 54851 DATE: 06/02/2017</p>	<p></p>



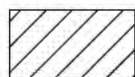
NOT TO SCALE

<p>UPPER ST. JOHNS RIVER BASIN TAYLOR CREEK L-73 LEVEE IMPROVEMENTS INDIAN RIVER COUNTY, FLORIDA</p>	<p>ST. JOHNS RIVER WATER MANAGEMENT DISTRICT P.O. BOX 1429 PALATKA, FLOR DA</p>	<p>SHEET NUMBER: C15</p>
<p>TYPICAL SECTION SPILLWAY 2 (NORTH SPILLWAY) NO WETLAND IMPACTS</p>	<p>AMY POGUE WRIGHT P.E. # 54851 DATE: 06/02/2017</p>	

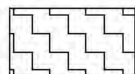


NOT TO SCALE

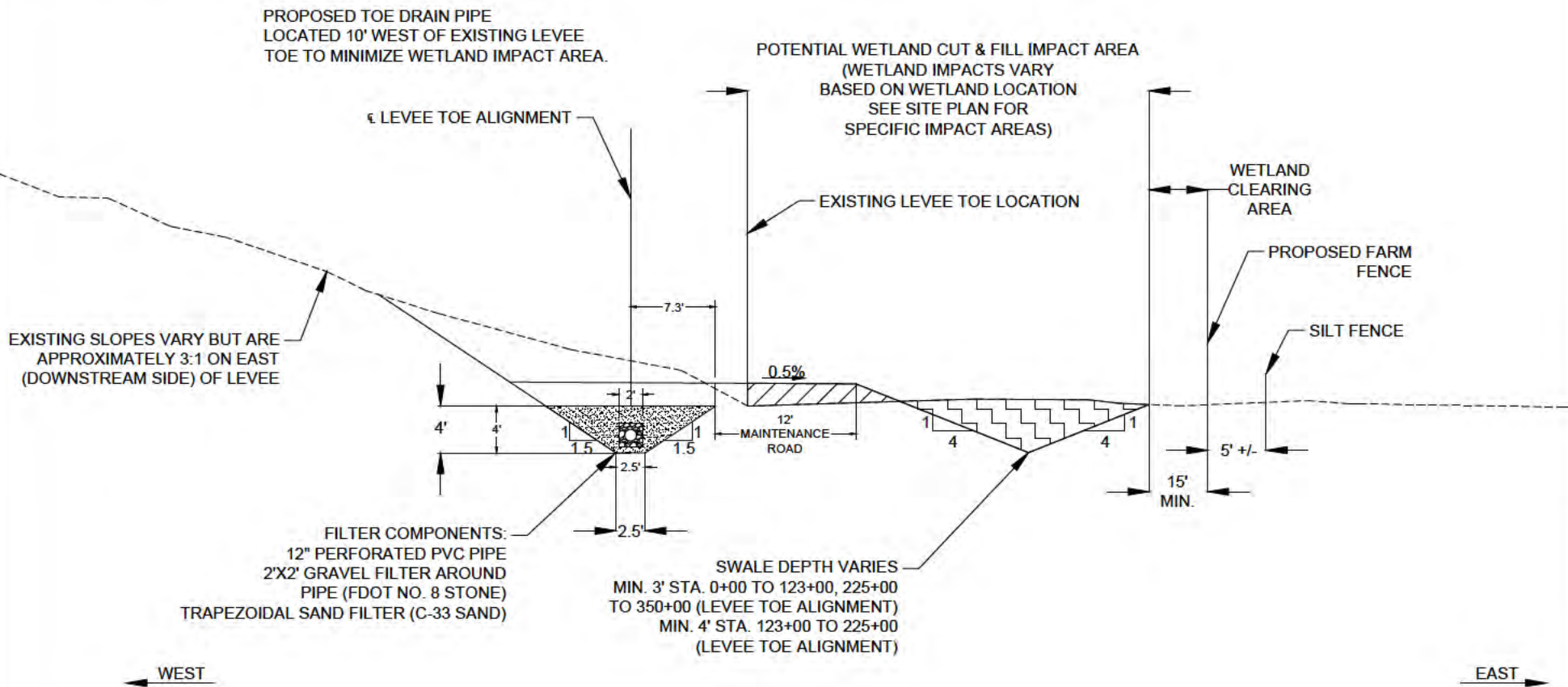
<p>UPPER ST. JOHNS RIVER BASIN TAYLOR CREEK L-73 LEVEE IMPROVEMENTS INDIAN RIVER COUNTY, FLORIDA</p>	<p>ST. JOHNS RIVER WATER MANAGEMENT DISTRICT P.O. BOX 1429 PALATKA, FLORIDA</p>	<p>SHEET NUMBER: C16</p>
<p>TYPICAL SECTION UPLAND AREAS W/ TOE DRAIN AND SWALE</p>	<p>AMY POGUE WRIGHT P.E. # 54851 DATE: 06/02/2017</p>	<p>SHEET NUMBER: C16</p>



WETLAND FILL



WETLAND CUT



NOT TO SCALE

UPPER ST. JOHNS RIVER BASIN
TAYLOR CREEK L-73 LEVEE IMPROVEMENTS
INDIAN RIVER COUNTY, FLORIDA



**ST. JOHNS RIVER
WATER MANAGEMENT DISTRICT**
P.O. BOX 1429 PALATKA, FLOR DA

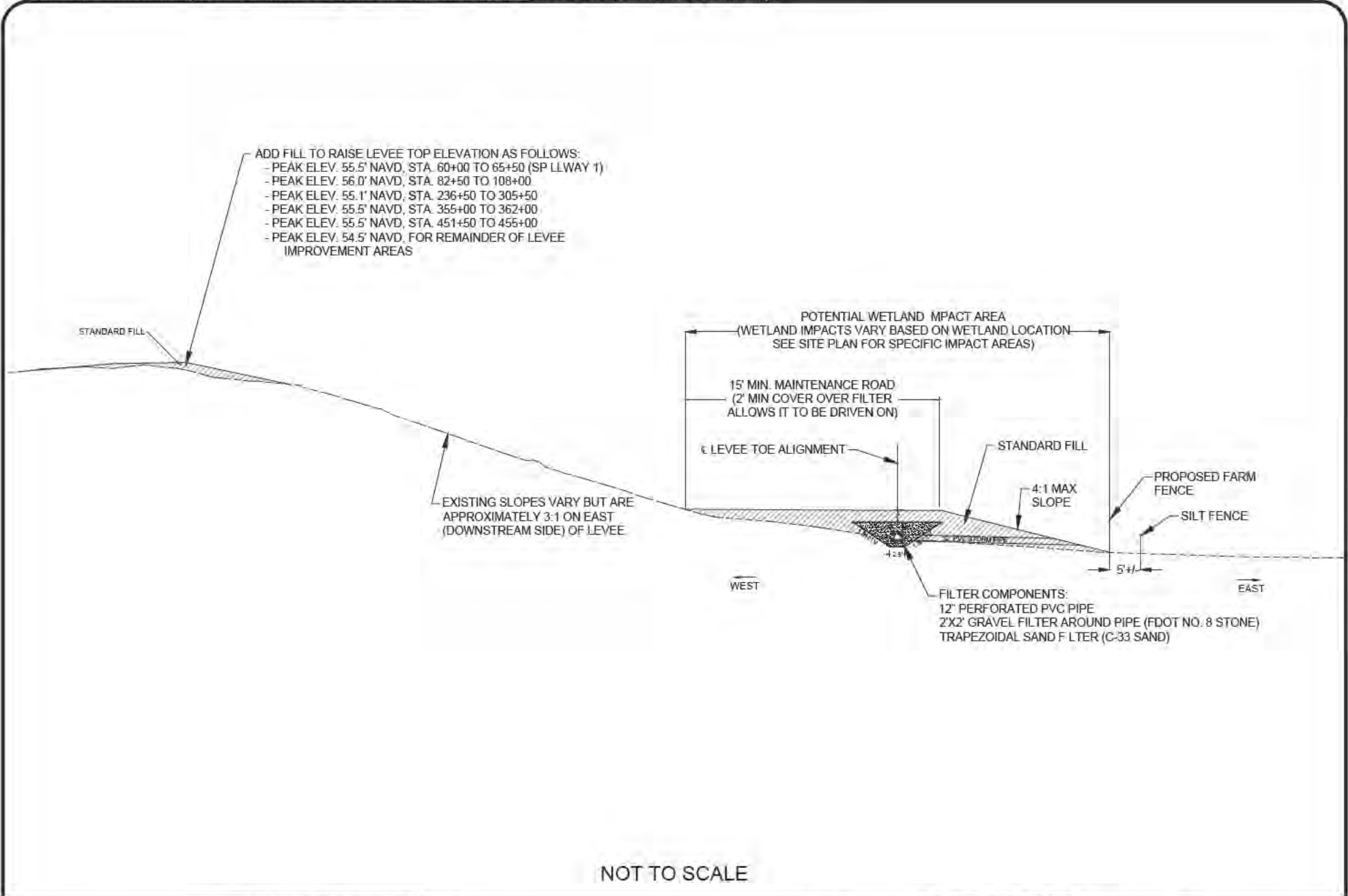


TYPICAL SECTION
WETLAND AREAS W/ TOE DRAIN AND SWALE
WETLANDS 2, 5, 6, 7, 8, 9, 10, 11, 12, AND 13

AMY POGUE WRIGHT P.E. # 54851 DATE: 06/02/2017

SHEET NUMBER:

C17



UPPER ST. JOHNS RIVER BASIN
TAYLOR CREEK L-73 LEVEE IMPROVEMENTS
INDIAN RIVER COUNTY, FLORIDA



**ST. JOHNS RIVER
WATER MANAGEMENT DISTRICT**



P.O. BOX 1429 PALATKA, FLORIDA

TYPICAL SECTION
WETLAND AREAS W/ TOE DRAIN BUT NO SWALE
WETLANDS 1, 4, 14 AND 15

AMY POGUE WRIGHT P.E. # 54851 DATE: 06/02/2017

SHEET NUMBER:

C18

- ADD FILL TO RAISE LEVEE TOP ELEVATION AS FOLLOWS:
- PEAK ELEV. 55.5' NAVD, STA. 58+00 TO 65+50 (SPILLWAY 1)
 - PEAK ELEV. 57.0' NAVD, STA. 79+00 TO 104+00
 - PEAK ELEV. 56.0' NAVD, STA. 104+00 TO 111+00
 - PEAK ELEV. 55.5' NAVD, STA. 111+00 TO 145+00
 - PEAK ELEV. 57.0' NAVD, STA. 352+00 TO 359+00
 - PEAK ELEV. 56.0' NAVD, STA. 359+00 TO 365+50
 - PEAK ELEV. 55.0' NAVD, STA. 365+50 TO 372+50
 - PEAK ELEV. 55.0' NAVD, STA. 400+00 TO 448+00
 - PEAK ELEV. 55.5' NAVD, STA. 448+00 TO 455+50
 - PEAK ELEV. 54.5' NAVD, FOR REMAINDER OF LEVEE IMPROVEMENT AREAS

STANDARD FILL

4:1 MAXIMUM SIDE SLOPE

POTENTIAL WETLAND IMPACT AREA
(WETLAND IMPACTS VARY BASED ON WETLAND LOCATION
SEE SITE PLAN FOR SPECIFIC IMPACT AREAS)

WETLAND
CLEARING
AREA

PROPOSED FARM
FENCE

SILT FENCE

15' MIN.
MAINTENANCE
ROAD / CLEAR ZONE

5' +/-

EXISTING SLOPES VARY BUT ARE
APPROXIMATELY 3:1 ON EAST
(DOWNSTREAM SIDE) OF LEVEE

NOT TO SCALE

UPPER ST. JOHNS RIVER BASIN
TAYLOR CREEK L-73 LEVEE IMPROVEMENTS
INDIAN RIVER COUNTY, FLORIDA



**ST. JOHNS RIVER
WATER MANAGEMENT DISTRICT**
P.O. BOX 1429 PALATKA, FLORIDA

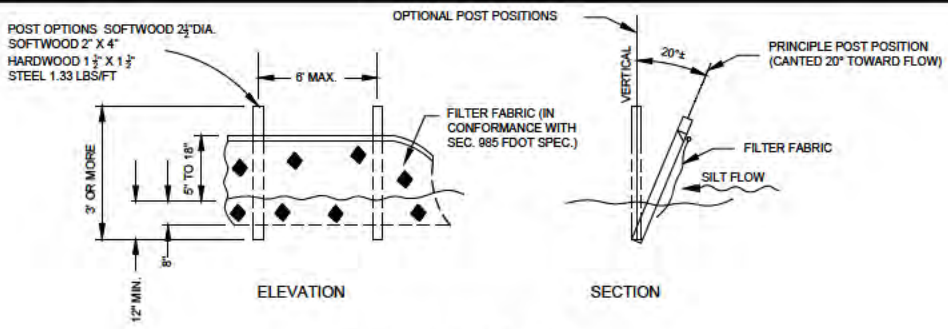


TYPICAL SECTION
WETLAND AREAS W/ NO FILTER OR SWALE
WETLANDS 17, 18, 19 AND 20

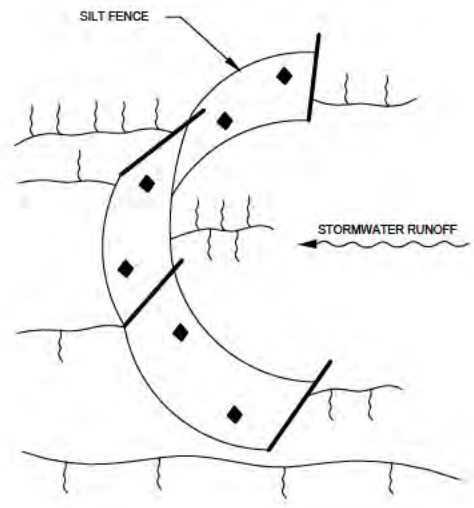
AMY POGUE WRIGHT P.E. # 54851 DATE: 06/02/2017

SHEET NUMBER:

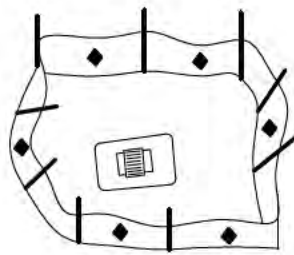
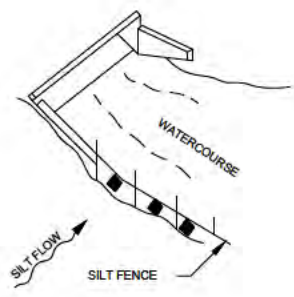
C19



TYPE III SILT FENCE



SILT FENCE PROTECTION IN DITCHES WITH INTERMITTENT FLOW



SILT FENCE PROTECTION AROUND DITCH BOTTOM INLETS

SILT FENCE APPLICATIONS

NOTES FOR SILT FENCES

1. TYPE III SILT FENCE TO BE USED AT MOST LOCATIONS. WHERE USED IN DITCHES, THE SPACING FOR TYPE III SILT FENCE SHALL BE IN ACCORDANCE WITH CHART 1, SHEET 1 (FDOT INDEX NO. 102).
2. TYPE IV SILT FENCE TO BE USED WHERE LARGE SEDIMENT LOADS ARE ANTICIPATED. SUGGESTED USE IS WHERE FILL SLOPE IS 12 OR STEEPER AND LENGTH OF SLOPE EXCEEDS 25 FEET. AVOID USE WHERE THE DETAINED WATER MAY BACK INTO TRAVEL LANES OR OFF THE RIGHT OF WAY.
3. DO NOT CONSTRUCT SILT FENCES ACROSS PERMANENT FLOWING WATERCOURSES. SILT FENCES ARE TO BE AT UPLAND LOCATIONS AND TURBIDITY BARRIERS USED AT PERMANENT BODIES OF WATER.
4. WHERE USED AS SLOPE PROTECTION, SILT FENCE IS TO BE CONSTRUCTED ON 0% LONGITUDINAL GRADE TO AVOID CHANNELIZING RUNOFF ALONG THE LENGTH OF THE FENCE.
5. SILT FENCE TO BE PAID FOR UNDER THE CONTRACT UNIT PRICE FOR STAKED SILT FENCE, (LF).

TEMPORARY SILT FENCE DETAIL

NOT TO SCALE

UPPER ST. JOHNS RIVER BASIN
TAYLOR CREEK L-73 LEVEE IMPROVEMENTS
INDIAN RIVER COUNTY, FLORIDA



ST. JOHNS RIVER
WATER MANAGEMENT DISTRICT
P.O. BOX 1429 PALATKA, FLOR DA



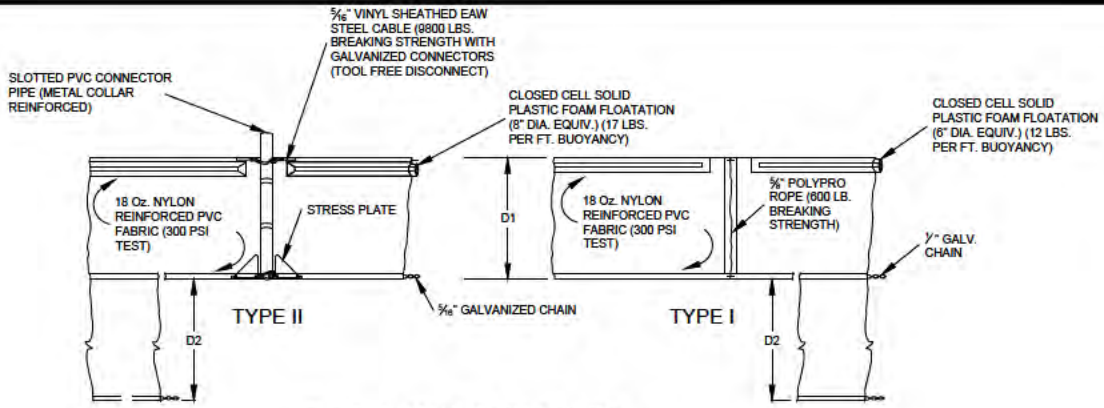
EROSION & SEDIMENTATION CONTROL

AMY POGUE WRIGHT P.E. # 54851 DATE: 06/02/2017

SHEET NUMBER:
C20

I:\ENGDATA\DESIGN\JUS\RB\Taylor_Creek_Reservoir\LEVEE IMPROVEMENTS PROJECT\DRAWINGS\PERMIT DRAWINGS\SITE PLAN.dwg

I:\ENGDATA\DESIGN\US\RB\Taylor Creek Reservoir\LEVEE IMPROVEMENTS PROJECT\DRAWINGS\PERMIT DRAWINGS\SITE PLAN.dwg

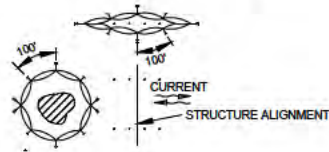
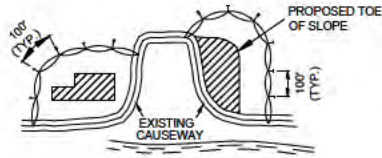


D1 5' STD. (SINGLE PANEL FOR DEPTHS 5' OR LESS)
 D2 5' STD. (ADDITIONAL PANEL FOR DEPTHS > 5')
 CURTAIN TO REACH BOTTOM UP TO DEPTHS OF 10 FEET
 TWO (2) PANELS TO BE USED FOR DEPTHS GREATER THAN
 10 FEET UNLESS SPECIAL DEPTH CURTAINS SPECIFICALLY
 CALLED FOR IN THE PLANS OR AS DETERMINED BY THE
 ENGINEER.

NOTICE COMPONENTS OF TYPE I AND II MAY BE SIMILAR OR IDENTICAL TO PROPRIETARY DESIGN. ANY INFRINGEMENT ON THE PROPRIETARY RIGHTS OF THE DESIGNER SHALL BE THE SOLE RESPONSIBILITY OF THE USER. SUBSTITUTIONS FOR TYPES I AND II SHALL BE AS APPROVED BY THE ENGINEER.

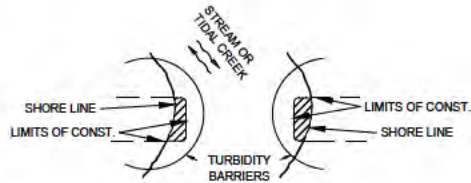
FLOATING TURBIDITY BARRIERS

NOT TO SCALE



GENERAL NOTES

1. FLOATING TURBIDITY BARRIERS ARE TO BE PAID FOR UNDER THE CONTRACT UNIT PRICE FOR FLOATING TURBIDITY BARRIER, LF.
2. STAKED TURBIDITY BARRIERS ARE TO BE PAID FOR UNDER THE CONTRACT UNIT PRICE FOR STAKED TURBIDITY BARRIER, LF.



NOTES

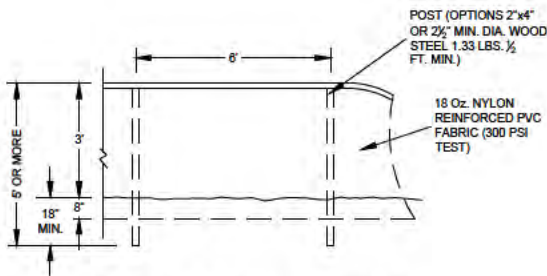
1. TURBIDITY BARRIERS ARE TO BE USED IN ALL PERMANENT BODIES OF WATER REGARDLESS OF WATER DEPTH.
2. NUMBER AND SPACING OF ANCHORS DEPENDENT ON CURRENT VELOCITIES.
3. DEPLOYMENT OF BARRIER AROUND PILE LOCATIONS MAY VARY TO ACCOMMODATE CONSTRUCTION OPERATIONS.
4. NAVIGATION MAY REQUIRE SEGMENTING BARRIER DURING CONSTRUCTION OPERATIONS.
5. TURBIDITY BARRIERS SHALL CONFORM TO SECTION 104 OF THE FLORIDA DEPARTMENT OF TRANSPORTATION STANDARD SPECIFICATIONS FOR ROAD AND BRIDGE CONSTRUCTION, LATEST EDITION.

LEGEND

- PILE LOCATIONS
- ▨ DREDGE OR FILL AREA
- MOORING BUOY W/ANCHOR
- ANCHOR
- BARRIER MOVEMENT DUE TO CURRENT ACTION

TURBIDITY BARRIER APPLICATIONS

NOT TO SCALE



STAKED TURBIDITY BARRIER

NOT TO SCALE

NOTES

TURBIDITY BARRIERS FOR FLOWING STREAMS AND TIDAL CREEKS MAY BE EITHER FLOATING, OR STAKED TYPES OR ANY COMBINATIONS OF TYPES THAT WILL SUIT SITE CONDITIONS AND MEET EROSION CONTROL AND WATER QUALITY REQUIREMENTS. THE BARRIER TYPE(S) WILL BE AT THE CONTRACTORS OPTIONS UNLESS OTHERWISE SPECIFIED IN THE PLANS, HOWEVER PAYMENT WILL BE UNDER THE PAY ITEM(S) ESTABLISHED IN THE PLANS FOR FLOATING TURBIDITY BARRIERS TO BE INSTALLED IN VERTICAL POSITION UNLESS OTHERWISE DIRECTED BY THE DISTRICT.

UPPER ST. JOHNS RIVER BASIN
 TAYLOR CREEK L-73 LEVEE IMPROVEMENTS
 INDIAN RIVER COUNTY, FLORIDA



**ST. JOHNS RIVER
 WATER MANAGEMENT DISTRICT**
 P.O. BOX 1429 PALATKA, FLOR DA



EROSION & SEDIMENTATION CONTROL

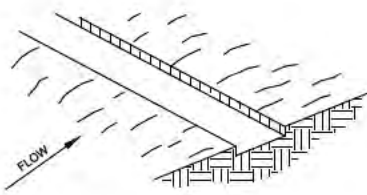
AMY POGUE WRIGHT P.E. # 54851 DATE: 06/02/2017

SHEET NUMBER:

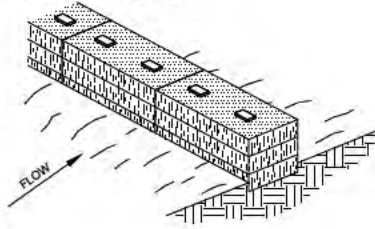
C21

I:\ENGDATA\DESIGN\US\RB\Taylor_Creek_Reservoir\LEVEE IMPROVEMENTS PROJECT\DRAWINGS\PERMIT DRAWINGS\SITE PLAN.dwg

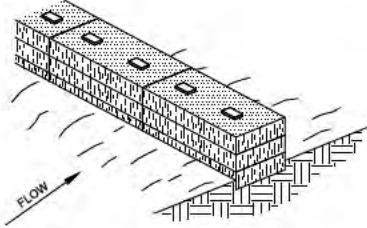
1. EXCAVATE THE TRENCH
4" DEEP BY THE BALE WIDTH.



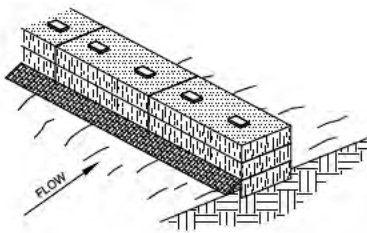
2. PLACE AND STAKE BALES.



3. WEDGE LOOSE STRAW BETWEEN
THE BALES.



4. BACKFILL AND COMPACT THE
EXCAVATED SOIL.



NOTES

1. INSPECTION SHALL BE FREQUENT AND REPAIR OR REPLACEMENT SHALL BE MADE PROMPTLY AS NEEDED.
2. BALES SHALL BE REMOVED WHEN THEY HAVE SERVED THEIR USEFULNESS SO AS NOT TO BLOCK OR IMPEDE STORM FLOW OR DRAINAGE.

HAY BALE BARRIER
NOT TO SCALE

EROSION AND SEDIMENT CONTROL NOTES

1. THE CONTRACTOR IS RESPONSIBLE FOR REMOVING SILT FROM SITE IF NOT REUSABLE ON-SITE AND ASSURING PLAN ALIGNMENT AND GRADE IN ALL WORK AT COMPLETION OF CONSTRUCTION.
2. ON-SITE PROTECTION IN ADDITION TO THE ABOVE MUST BE PROVIDED THAT WILL NOT PERMIT SILT TO LEAVE THE PROJECT CONFINES DUE TO UNSEEN CONDITIONS OR ACCIDENTS.
3. THE FILTER BARRIER SHALL BE ENTRENCHED AND BACKFILLED. A TRENCH SHALL BE EXCAVATED TO A MINIMUM DEPTH OF 8 INCHES. THE EXCAVATED SOIL SHALL BE BACKFILLED AND COMPACTED AGAINST THE FILTER BARRIER.
4. SILT FENCES AND FILTER BARRIERS SHALL BE INSPECTED IMMEDIATELY AFTER EACH RAINFALL AND AT LEAST DAILY DURING PROLONGED RAINFALL. ANY REQUIRED REPAIRS SHALL BE MADE IMMEDIATELY.
5. SHOULD THE FABRIC ON A SILT FENCE OR FILTER BARRIER DECOMPOSE OR BECOME INEFFECTIVE PRIOR TO THE END OF THE EXPECTED USABLE LIFE AND THE BARRIER STILL BE NECESSARY, THE FABRIC SHALL BE REPLACED IMMEDIATELY.
6. ANY SEDIMENT DEPOSITS REMAINING IN PLACE AFTER THE SILT FENCE OR FILTER BARRIER IS NO LONGER REQUIRED SHALL BE DRESSED TO CONFORM WITH THE EXISTING GRADE, PREPARED AND GRASSED.
7. THE CONTRACTOR IS RESPONSIBLE FOR FOLLOWING THE BEST EROSION AND SEDIMENT CONTROL PRACTICES AS OUTLINED IN THE PLANS, SPECIFICATIONS, PERMITS, AND ST. JOHNS RIVER WATER MANAGEMENT DISTRICT CRITERIA.
8. FOR ADDITIONAL INFORMATION ON SEDIMENT AND EROSION CONTROL REFER TO THE FLORIDA DEVELOPMENT MANUAL - A GUIDE TO SOUND LAND AND WATER MANAGEMENT FROM THE STATE OF FLORIDA DEPARTMENT OF ENVIRONMENTAL PROTECTION (F.D.E.P.) CHAPTER 6, LATEST EDITION.
9. ALL DISTURBED AREAS SHALL BE GRASSED, FERTILIZED, WATERED AND MAINTAINED UNTIL A PERMANENT VEGETATIVE COVER IS ESTABLISHED. GRASSING SHALL CONFORM TO THE REQUIREMENTS OF SECTIONS 570 AND 981 THRU 983 OF THE FLORIDA DEPARTMENT OF TRANSPORTATION STANDARD SPECIFICATION FOR ROAD AND BRIDGE CONSTRUCTION, LATEST EDITIONS. NOTE THAT BAHIA SHALL NOT BE ALLOWED. OTHER GRASSING ALTERNATIVES MAY BE USED WITH PRIOR DISTRICT APPROVAL.

UPPER ST. JOHNS RIVER BASIN
TAYLOR CREEK L-73 LEVEE IMPROVEMENTS
INDIAN RIVER COUNTY, FLORIDA



**ST. JOHNS RIVER
WATER MANAGEMENT DISTRICT**
P.O. BOX 1429 PALATKA, FLOR DA



EROSION & SEDIMENTATION CONTROL

AMY POGUE WRIGHT P.E. # 54851 DATE: 06/02/2017

SHEET NUMBER:

C22